

Waste and Recycling Scrutiny Panel

28th February 2024



1

Waste and Recycling Collection in Crawley



2

Crawley Waste and Recycling Contract - Sickness and Attrition

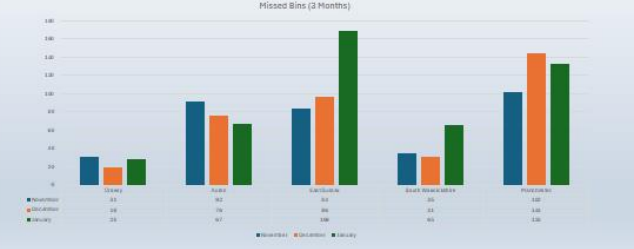
Contract	Code	Sickness %		Attrition %	
		FY24	FY25	FY24	FY25
Arun	ARU	4.9%	5.0%	29%	
Crawley	CRA	0.8%	5.0%	23%	
East Sussex Hastings	ESH	6.3%	4.0%	26%	
East Sussex Rother	ESR	2.7%	3.0%	20%	
East Sussex Wealden	ESW	4.6%	4.4%	26%	
Portsmouth Green waste	PGW	3.5%			
Portsmouth	POH	3.5%			
Tandridge	TAN	5.0%	0.0%	25%	
Thurrock	THU				
Waverley	WAV	5.1%	4.0%	34%	
Winchester	WIN	7.3%	6.0%	55%	
Region 2					

Attrition Breakdown

- 4 leaders left due to more money or other opportunities
- 2 leaders Resigned due to disciplinary's
- 4 leader failed the probation period
- 1 leader dismissed (gross Misconduct)
- 1 leader returned to old employer

3

Missed Bins (3 Months) - Comparative Performance



4

Recycling Performance - West Sussex

Percentage of Household Waste Sent for Recycling, Reuse or Composting (NI192)	2019/2020	2020/2021	2021/2022
Adur District Council	36.59%	41.11%	41.43%
Adur District Council	42.84%	42.34%	42.62%
Arun District Council			
Chichester District Council	44.93%	44.50%	47.01%
Crawley Borough Council	30.27%	31.92%	31.39%
Horsham District Council	53.32%	53.52%	53.09%
Mid Sussex District Council	42.94%	41.75%	42.85%
Worthing Borough Council	39.96%	41.49%	43.63%

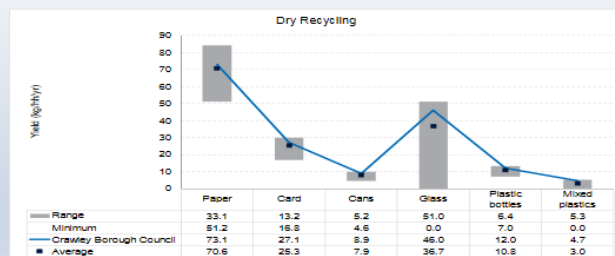
5

Recycling Performance - Comparator Authorities

Local Authority	WRAP Rurality	Residual Collection	Dry Recycling Collection scheme	Frequency	Food waste Collection scheme
Adur District Council	4	Weekly	Co-Mingled	Fortnightly	none
Adur District Council	4	Weekly	Co-Mingled	Fortnightly	none
Barnet LB	2	Weekly	Co-Mingled	Weekly	none
Brighton and Hove Council	2	Weekly	Two Stream	Fortnightly	none
Crawley Borough Council	2	Weekly	Co-Mingled	Fortnightly	none
Eastbourne Borough Council	2	Weekly	Two Stream	Fortnightly	none
Hammersmith and Fulham LB	2	Weekly	Co-Mingled	Weekly	none
Havering LB	2	Weekly	Co-Mingled	Weekly	none
Dudley and Wigan Borough Council	2	Weekly	Co-Mingled	Weekly	none
Redbridge LB	2	Weekly	Two Stream	Weekly	none
Rushmoor Borough Council	2	Weekly	Two Stream	Fortnightly	none
Wandsworth LB	2	Weekly	Co-Mingled Plus Textiles	Weekly	none
Worthing Borough Council	2	Weekly	Co-Mingled	Fortnightly	none

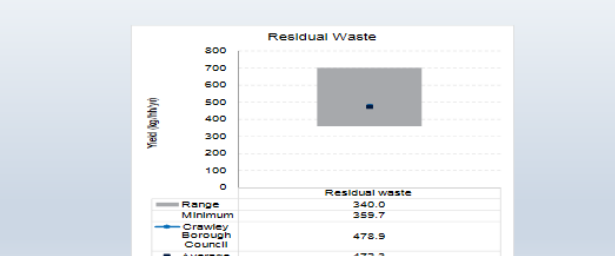
6

Dry Recycling - Comparative Performance



7

Residual Waste - Comparative Performance



8

National Waste Strategy

- Standardised recycling and waste collections across the country (April 2026)
 - Residual (general, non-recyclable) waste collections to be collected (at least) fortnightly.
 - Garden waste will remain a subscription based fee-paying service.
 - Co-mingled recycling will continue to be collected on a fortnightly basis.
 - A separate weekly food waste and absorbent hygiene products collection will be mandated.
- A separate soft plastics collection (crisp packets, cling film) will be required by March 2027.

Scrutiny Panel Review - Proposed scoping

- Session 1 - Background and Scoping
- Session 2 - Simpler Recycling - Local Delivery and Projection Impacts (recycling, carbon, operational)
- Session 3 - Recycling Performance Local Interventions
 - Simpler Recycling - Crawley Implementation
- Session 4 - Conclusions and Recommendations